



INSTALL CONFIDENCE



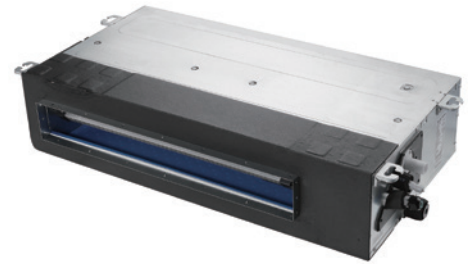
MULTI SPLIT INVERTER 50HZ R-410A

YU2E14(18) YU3E21(27) YU4E36 YU5E42

MULTI SPLIT INVERTER 50HZ R-410A

Condensing Unit

- High efficiency compressor
- Compact design
- Quiet running mode
- Easy maintenance
- Valve protection cover
- Golden fin



Remote/Wired Controller

- Clock function
- Multi-speed fan
- 24-hour timer setting



Indoor Unit - High Wall

- Hidden display
- Follow me
- Auto random restart
- Mute operation
- 2-Way drainage
- Digital tube display
- Washable filter
- Golden fin



Indoor Unit - Cassette

- 360° Air outlet
- Fresh air inlet
- Built-in drain pump
- Auto random restart
- Super slim design
- Follow me
- Digital tube display
- Washable filter
- Golden fin
- Wired controller (option)

Indoor Unit - Slim duct

- Auto random restart
- 2-way drainage
- Easy maintenance
- High velocity air flow
- Washable filter
- Golden fin
- Built-in drain pump (option)



The YORK[®] line of Multi Splits Air Conditioners includes a wide range of sizes to give you more flexibility in your product offering. Each model is designed to provide comfort and efficiency in an easy-to-operate unit and the sleek design fits a variety of spaces, whether it's in a home or office. Models meet the highest energy efficiency ratings, so less energy is consumed without sacrificing comfort and performance. Both the condensing unit and indoor unit are engineered for quiet operation. And comfort control settings are easily changed with the touch of a button on the remote control.

MULTI SPLIT INVERTER 50HZ R-410A

Features and Benefits



24-Hour Timer

Allows programmed start times up to 24 hours in advance for flexible and more convenient operation.



Super Quiet

Technology and compact design reduce noise level to as low as 25 decibels for a super quiet and comfortable user experience.



Multi-Speed Fan

Multi-speed fan helps satisfy various airflow requirements.



Self Diagnosis

Clearly displayed failure codes allow for quicker troubleshooting and easier maintenance.



Auto Random Restart

Unit is automatically randomly returned to previous operating conditions after a power outage, for simplified operation.



R-410A

Environment-friendly refrigerant cools and heats more efficiently without destroying the ozone layer.



3-Minute Protection

A 3-minute delay before the compressor will restart helps avoid compressor damage and work time.



Golden Fin

The unique anti-corrosive golden coating on aluminum fin of all the heat exchangers can withstand the salty air, rain and other corrosive elements. It also effectively prevents bacteria from breeding and improves heat efficiency.

MULTI SPLIT INVERTER 50HZ R-410A

Specification

		Outdoor Unit							
Outdoor Model		YU2E14YEEBXEO-3	YU2E18YEEBXEO-3	YU3E21YEEBXEO-3	YU3E27YEEBXEO-3	YU4E36YEEBXEO-3	YU5E42YEEBXEO-3		
Power Supply		V-Ph-Hz	220-240V-1Ph-50Hz						
Cooling	Capacity	W	13,989(6,142-15,388)	18,084(6,824-19,892)	20,813(7,506-22,895)	26,955(7,848-29,650)	35,826(8,530-37,532)	40,944(9,451-43,332)	
	Power Input	W	1,240(198-2,100)	1,750(280-2,300)	1,920(350-2,800)	2,460(560-3,400)	3,600(680-4,930)	4,450(750-5,450)	
	Current	A	5.4	7.6	8.3	10.7	15.97	19.74	
	EER	W/W	3.31	3.03	3.18	3.21	2.92	2.72	
	SEER	W/W	6.16	6.20	6.16	6.23	6.14	6.14	
Energy Efficiency Class			A++	A++	A++	A++	A++	A++	
Heating	Capacity	W	16,378(6,995-18,015)	19,107(7,541-21,017)	22,519(8,155-24,771)	27,978(8,359-30,776)	37,532(9,110-38,214)	44,356(10,100-44,800)	
	Power Input	W	1,150(198-2,100)	1,540(280-2,300)	1,780(350-2,800)	2,270(560-3,400)	3,400(530-3,950)	3,800(600-4,450)	
	Current	A	5.0	6.7	7.8	9.8	15.08	16.86	
	COP	W/W	4.17	3.64	3.71	3.61	3.24	3.42	
	SCOP(average)	W/W	4.14	4.14	4.09	4.04	4.07	4.10	
Energy Efficiency Class			A+	A+	A+	A+	A+	A+	
Max power		W	2,100	2,300	2,800	3,400	5,300	5,600	
Max current		A	10	11	13	16	23.5	24.5	
Compressor	Type		Rotary	Rotary	Twin Rotary	Twin Rotary	Rotary	Rotary	
	Rated Current	A	5.88	7.25	7.95	8.70	5.38	5.38	
	Refrigerant Oil	ml	320(VG74)	450(VG74)	500(VG74)	670(VG74)	1,000(VG74)	1,000(VG74)	
Outdoor fan motor	Type		DC Inverter	DC Inverter	DC Inverter	DC Inverter	DC Inverter	DC Inverter	
	Quantities		1	1	1	1	1	1	
	Output Power	W	40	40	65	65	120	120	
	Capacitor	uF	/	/	/	/	/	/	
	Speed	rpm	850-350	850-350	870-350	870-350	940-240	940-240	
Refrigerant	Type		R-410A	R-410A	R-410A	R-410A	R-410A	R-410A	
	GWP		2,088	2,088	2,088	2,088	2,088	2,088	
	Charged Volume	kg	1.30	1.35	1.50	1.40	3.10	3.10	
Air Flow Volume		m ³ /h	2,100	2,100	2,700	2,700	4,000	4,200	
Sound Pressure Noise Level		dB(A)	54	55	56	58	61	61	
Sound Power Noise Level		dB(A)	61	62	65	65	68	68	
Throttle type			EXV	EXV	EXV	EXV	EXV	EXV	
Piping	Liquid Side	mm(inch)	2×6.35(1/4)	2×6.35(1/4)	3×6.35(1/4)	3×6.35(1/4)	4×6.35(1/4)	5×6.35(1/4)	
	Gas Side	mm(inch)	2×9.52(3/8)	2×9.52(3/8)	3×9.52(3/8)	3×9.52(3/8)	4×9.52(3/8)	5×9.52(3/8)	
	Max. length for all rooms	m	40	40	60	60	80	80	
	Max. length for one IU	m	25	25	30	30	35	35	
	Max. height difference between IU and OU	m	15	15	15	15	15	15	
Max. height difference between IUs		m	10	10	10	10	10	10	
Dimension	Net Dimension (W×H×D)	mm	800×545×315	800×545×315	834×655×328	834×655×328	985×808×395	985×808×395	
	Packing Dimension (W×H×D)	mm	920×620×400	920×620×400	945×725×435	945×725×435	1,105×895×495	1,105×895×495	
Weight	Net	kg	34	36	44	46	77	79	
	Gross	kg	37	39	47	49	82	84	
Ambient Temp (Cooling/Heating)		°C	-10~52°C/-15~24°C	-10~52°C/-15~24°C	-10~52°C/-15~24°C	-10~52°C/-15~24°C	-15~52°C/-15~24°C	-15~52°C/-15~24°C	

MULTI SPLIT INVERTER 50HZ R-410A

High Wall Indoor							
Indoor Model			YHSE07XEEXE-R3	YHSE09XEEXE-R3	YHSE12XEEXE-R3	YHSE18XEEXE-R3	YHSE24XEEXE-R3
Cooling	Capacity	Btu/h	7,165(3,855-9,220)	8,701(4,780-11,260)	12,285(5,800-12,625)	17,745(8,530-19,790)	23,986(9,895-24,908)
	Power Input	W	40(12-68)	40(12-68)	40(12-68)	63(16-88)	66(16-88)
Heating	Capacity	Btu/h	7,510(3,340-8,530)	9,215(4,095-10,240)	12,625(5,120-12,625)	18,085(7,680-19,790)	24,054(7,165-27,296)
	Power Input	W	40(12-68)	40(12-68)	40(12-68)	63(16-88)	66(16-88)
Indoor fan motor	Type		AC	AC	AC	DC	AC
	Capacitor	uF	1.5	1.5	1.5	/	3
	Speed (Hi/Mi/Lo)	rpm	1,130/1,000/850	1,130/1,000/850	1,130/1,000/850	1,000/930/850	1,080/970/850
Indoor air flow volume		m ³ /h	550	550	550	900	1,150
Indoor sound pressure noise level (Hi/Mi/Lo)		dB(A)	40/38/34	40/38/34	42/40/36	45/42/35	49/42/35
Indoor sound power noise level (Hi)		dB(A)	50	50	52	57	60
Dimension	Net Dimension (W×H×D)	mm	750×285×200	750×285×200	750×285×200	900×310×225	1,082×330×233
	Packing Dimension (W×H×D)	mm	800×345×265	800×345×265	800×345×265	950×380×290	1,155×397×312
Weight	Net	kg	8	8	8	12	15
	Gross	kg	11	11	11	14	16.5
Pipe Diameter	Liquid Side	mm(inch)	6.35(1/4)	6.35(1/4)	6.35(1/4)	6.35(1/4)	6.35(1/4)
	Gas Side	mm(inch)	9.52(3/8)	9.52(3/8)	9.52(3/8)	12.7(1/2)	15.88(5/8)
	Drainage	mm	16.5	16.5	16.5	16.5	16.5
Controller		Standard	Remote Control				
Setting temperature range		°C	16~32	16~32	16~32	16~32	16~32

Cassette Indoor							
Indoor Model			YTSE09XEEXA-R3	YTSE12XEEXA-R3	YTSE18XEEXA-R3	YKSE24XEEXA-R3	
Cooling	Capacity	Btu/h	9,560(5,120-12,115)	12,285(5,800-12,625)	18,080(8,530-19,107)	24,000(7,400-28,000)	
	Power Input	W	70(17.5-109)	70(17.5-109)	70(17.5-109)	110(27.5-171)	
Heating	Capacity	Btu/h	10,240(5,460-13,000)	13,306(6,930-15,080)	19,790(10,340-24,000)	27,300(6,800-31,700)	
	Power Input	W	70(17.5-109)	70(17.5-109)	70(17.5-109)	110(27.5-171)	
Indoor fan motor	Type		AC	AC	AC	DC	
	Capacitor	uF	2	2	2	/	
	Speed (Hi/Mi/Lo)	rpm	810/750/660	810/750/660	810/750/660	580/530/470	
Indoor air flow volume		m ³ /h	700/600/530	700/600/530	700/600/530	1,400/1,300/1,150	
Indoor sound pressure noise level (Hi/Mi/Lo)		dB(A)	45/41/35	45/41/35	45/41/35	47/45/42	
Indoor sound power noise level (Hi)		dB(A)	56	56	56	57	
Dimension	Net Dim (W×H×D)	mm	570×260×570	570×260×570	570×260×570	840×246×840	
	Packing Dim (W×H×D)	mm	650×290×650	650×290×650	650×290×650	910×310×910	
	Net (Panel) (W×H×D)	mm	650×55×650	650×55×650	650×55×650	950×55×950	
	Packing (Panel)(W×H×D)	mm	710×80×710	710×80×710	710×80×710	1,000×100×1,000	
Weight	Net (Body)	kg	18	18	18	26	
	Gross (Body)	kg	21	21	21	30	
	Net (Panel)	kg	3	3	3	5	
	Gross (Panel)	kg	5	5	5	8	
Pipe Dia	Liquid Side	mm(inch)	6.35(1/4)	6.35(1/4)	6.35(1/4)	6.35(1/4)	
	Gas Side	mm(inch)	12.7(1/2)	12.7(1/2)	12.7(1/2)	15.88(5/8)	
	Drainage	mm	20	20	20	20	
Controller		Standard	Remote Control				
Setting temperature range			16~32	16~32	16~32	16~32	

MULTI SPLIT INVERTER 50HZ R-410A

		Duct Indoor					
Indoor Model		YASE07XEEXE-W3	YASE09XEEXE-W3	YASE12XEEXE-W3	YASE18XEEXE-W3	YASE24XEEXE-W3	
Cooling	Capacity	Btu/h	7,506(3,855-9,220)	8,872(5,120-12,115)	12,280(5,835-13,135)	17,400(8,530-19,790)	24,225(11,846-25,436)
	Power Input	W	45	45	75	137	90
Heating	Capacity	Btu/h	8,530(4,575-10,820)	9,895(5,800-12,450)	13,650(6,480-13,375)	19,790(9,690-21,835)	25,590(12,513-26,869)
	Power Input	W	45	45	75	137	90
Indoor fan motor	Type		AC	AC	AC	AC	DC
	Capacitor	uF	1.5	1.5	2	3	/
	Speed (Hi/Mi/Lo)	rpm	790/610/510	790/610/510	890/800/700	1,070/940/800	1,030/820/740
Indoor air flow volume		m ³ /h	420/336/294	420/336/294	580/464/406	860/688/602	1,150/880/780
ESP Rated		Pa	30	30	30	30	10/30
Indoor sound pressure noise level (Hi/Mi/Lo)		dB(A)	30/26/23	30/26/23	32/28/25	38/35/32	41/38/36
Indoor sound power noise level(Hi)		dB(A)	48	48	49	53	55
Dimension	Net Dim (W×H×D)	mm	840×185×460	840×185×460	840×185×460	1,160×185×460	1,300×200×470
	Packing Dim (W×H×D)	mm	1,030×250×525	1,030*250*525	1,030×250×525	1,350×250×525	1,610×275×580
Weight	Net	kg	17	17	18	21	29
	Gross	kg	20	20	21	26	33
Pipe Dia	Liquid Side	mm(inch)	6.35(1/4)	6.35(1/4)	6.35(1/4)	6.35(1/4)	6.35(1/4)
	Gas Side	mm(inch)	9.52(3/8)	9.52(3/8)	12.7(1/2)	12.7(1/2)	12.7(1/2)
	Drainage	mm	16.5	16.5	16.5	16.5	16.5
Controller		Standard	Wired Control				
Setting temperature range		°C	16~32	16~32	16~32	16~32	16~32

Remark: The above designs and specifications are subject to change of product improvement without prior notice.

MULTI SPLIT INVERTER 50HZ R-410A

Multi DC Inverter Combination Table

YU2E14YEEXEO-3

COOLING

Comb.	Indoor Units	Combinations (x1000 Btu/h)		Rated Capacity (kW)(Nom. cooling)		Total Cooling Capacity (kW)			Total Power Input (kW)			EER (W/W)	Energy Class
		Unit A	Unit B	Unit A	Unit B	Min.	Rated	Max.	Min.	Rated	Max.		
1 to 1	7	7	–	2.05	–	1.13	2.05	2.70	0.13	0.63	0.88	3.23	A
	9	9	–	2.55	–	1.00	2.55	3.30	0.13	0.79	0.96	3.23	A
	12	12	–	3.50	–	1.20	3.50	3.80	0.13	1.08	1.31	3.23	A
	18	18	–	4.10	–	1.90	4.10	4.50	0.17	1.27	2.10	3.23	A
1 to 2	7+7	7	7	2.05	2.05	1.80	4.10	4.51	0.20	1.24	2.10	3.31	A
	7+9	7	9	1.79	2.31	1.80	4.10	4.51	0.20	1.24	2.10	3.31	A
	9+9	9	9	2.05	2.05	1.80	4.10	4.51	0.20	1.24	2.10	3.31	A

HEATING

Comb.	Indoor Units	Combinations (x1000 Btu/h)		Rated Capacity (kW)(Nom. heating)		Total Heating Capacity (kW)			Total Power Input (kW)			COP (W/W)	Energy Class
		Unit A	Unit B	Unit A	Unit B	Min.	Rated	Max.	Min.	Rated	Max.		
1 to 1	7	7	–	2.15	–	0.98	2.15	2.50	0.15	0.54	0.90	4.01	A
	9	9	–	2.65	–	1.10	2.65	3.30	0.15	0.66	0.92	4.01	A
	12	12	–	3.50	–	1.00	3.50	3.80	0.15	0.88	1.30	4.00	A
	18	18	–	4.80	–	1.40	4.80	5.28	0.22	1.20	2.10	4.00	A
1 to 2	7+7	7	7	2.15	2.15	2.05	4.80	5.28	0.20	1.15	2.10	4.17	A
	7+9	7	9	2.10	2.70	2.05	4.80	5.28	0.20	1.15	2.10	4.17	A
	9+9	9	9	2.40	2.40	2.05	4.80	5.28	0.20	1.15	2.10	4.17	A

Multi DC Inverter Combination Table

YU2E18YEEXEO-3

COOLING

Comb.	Indoor Units	Combinations (x1000 Btu/h)		Rated Capacity (kW)(Nom. cooling)		Total Cooling Capacity (kW)			Total Power Input (kW)			EER (W/W)	Energy Class
		Unit A	Unit B	Unit A	Unit B	Min.	Rated	Max.	Min.	Rated	Max.		
1 to 1	7	7	–	2.05	–	1.23	2.05	2.70	0.16	0.64	0.88	3.20	A
	9	9	–	2.55	–	1.23	2.55	3.30	0.16	0.80	0.96	3.19	B
	12	12	–	3.50	–	1.23	3.50	3.80	0.16	1.07	1.31	3.27	A
	18	18	–	5.30	–	1.90	5.30	5.50	0.20	1.65	2.23	3.21	A
1 to 2	7+7	7	7	2.05	2.05	2.00	4.10	5.39	0.28	1.24	2.30	3.30	A
	7+9	7	9	2.06	2.64	2.00	4.70	5.73	0.28	1.46	2.30	3.23	A
	7+12	7	12	1.95	3.35	2.00	5.30	6.31	0.28	1.69	2.30	3.14	B
	9+9	9	9	2.65	2.65	2.00	5.30	5.83	0.28	1.75	2.30	3.03	B
	9+12	9	12	2.36	3.14	2.00	5.50	5.83	0.28	1.83	2.30	3.01	B

HEATING

Comb.	Indoor Units	Combinations (x1000 Btu/h)		Rated Capacity (kW)(Nom. heating)		Total Heating Capacity (kW)			Total Power Input (kW)			COP (W/W)	Energy Class
		Unit A	Unit B	Unit A	Unit B	Min.	Rated	Max.	Min.	Rated	Max.		
1 to 1	7	7	–	2.15	–	1.07	2.15	2.50	0.22	0.57	0.93	3.72	A
	9	9	–	2.65	–	1.23	2.65	3.30	0.22	0.71	0.95	3.73	A
	12	12	–	3.50	–	1.15	3.50	3.80	0.22	0.94	1.40	3.73	A
	18	18	–	5.40	–	1.50	5.40	5.60	0.25	1.45	2.10	3.71	A
1 to 2	7+7	7	7	2.50	2.50	2.21	5.00	5.90	0.28	1.34	2.30	3.72	A
	7+9	7	9	2.32	2.98	2.21	5.30	6.00	0.28	1.43	2.30	3.70	A
	7+12	7	12	2.03	3.47	2.21	5.50	6.16	0.28	1.51	2.30	3.64	A
	9+9	9	9	2.80	2.80	2.21	5.60	6.16	0.28	1.54	2.30	3.64	A
	9+12	9	12	2.40	3.20	2.21	5.60	6.16	0.28	1.51	2.30	3.72	A

MULTI SPLIT INVERTER 50HZ R-410A

Multi DC Inverter Combination Table

YU3E21YEEBXEO-3

COOLING

Comb.	Indoor Units	Combinations (x1000 Btu/h)			Rated Capacity (kW)(Nom. cooling)			Total Cooling Capacity (kW)			Total Power Input (kW)			EER (W/W)	Energy Class
		Unit A	Unit B	Unit C	Unit A	Unit B	Unit C	Min.	Rated	Max.	Min.	Rated	Max.		
1 to 1	18	18	–	–	5.30	–	–	1.75	5.30	5.50	0.23	1.65	2.40	3.21	A
	7+7	7	7	–	2.05	2.05	–	2.05	4.10	5.40	0.25	1.27	2.00	3.23	A
	7+9	7	9	–	2.01	2.59	–	2.05	4.60	5.67	0.25	1.42	2.00	3.23	A
	7+12	7	12	–	1.99	3.41	–	2.05	5.40	6.20	0.25	1.67	2.41	3.23	A
1 to 2	7+18	7	18	–	1.76	4.54	–	2.05	6.30	6.80	0.25	1.94	2.67	3.24	A
	9+9	9	9	–	2.60	2.60	–	2.05	5.20	6.29	0.25	1.61	2.41	3.23	A
	9+12	9	12	–	2.57	3.43	–	2.05	6.00	6.40	0.25	1.86	2.60	3.23	A
	9+18	9	18	–	2.10	4.20	–	2.05	6.30	6.75	0.25	1.94	2.67	3.24	A
	12+12	12	12	–	3.10	3.10	–	2.05	6.20	6.75	0.25	1.93	2.67	3.21	A
1 to 3	7+7+7	7	7	7	2.05	2.05	2.05	2.20	6.20	6.71	0.35	1.92	2.80	3.23	A
	7+7+9	7	7	9	1.92	1.92	2.46	2.20	6.30	6.77	0.35	1.94	2.80	3.24	A
	7+7+12	7	7	12	1.70	1.70	2.90	2.20	6.30	6.83	0.35	1.94	2.80	3.24	A
	7+9+9	7	9	9	1.76	2.27	2.27	2.20	6.30	6.83	0.35	1.94	2.80	3.24	A
	9+9+9	9	9	9	2.10	2.10	2.10	2.20	6.30	6.83	0.35	1.94	2.80	3.24	A

HEATING

Comb.	Indoor Units	Combinations (x1000 Btu/h)			Rated Capacity (kW)(Nom. heating)			Total Heating Capacity (kW)			Total Power Input (kW)			COP (W/W)	Energy Class
		Unit A	Unit B	Unit C	Unit A	Unit B	Unit C	Min.	Rated	Max.	Min.	Rated	Max.		
1 to 1	18	18	–	–	5.40	–	–	1.60	5.40	5.60	0.37	1.59	2.10	3.40	B
1 to 2	7+7	7	7	–	2.50	2.50	–	2.15	5.00	5.90	0.31	1.39	1.71	3.59	B
	7+9	7	9	–	2.45	3.15	–	2.15	5.60	6.20	0.31	1.56	1.79	3.59	B
	7+12	7	12	–	2.14	3.66	–	2.15	5.80	6.55	0.31	1.59	1.85	3.64	A
	7+18	7	18	–	1.76	4.54	–	2.15	6.30	7.25	0.31	1.75	2.10	3.60	B
	9+9	9	9	–	3.15	3.15	–	2.15	6.30	6.90	0.31	1.73	2.16	3.64	A
	9+12	9	12	–	2.65	3.50	–	2.15	6.30	7.04	0.31	1.73	2.50	3.64	A
	9+18	9	18	–	2.10	4.20	–	2.15	6.30	7.30	0.31	1.75	2.59	3.60	B
	12+12	12	12	–	3.15	3.15	–	2.15	6.30	7.30	0.31	1.73	2.59	3.64	A
1 to 3	7+7+7	7	7	7	2.15	2.15	2.15	2.39	6.60	7.26	0.35	1.78	2.80	3.71	A
	7+7+9	7	7	9	2.02	2.02	2.56	2.39	6.64	7.26	0.35	1.79	2.83	3.71	A
	7+7+12	7	7	12	1.78	1.78	3.04	2.39	6.60	7.26	0.35	1.82	2.80	3.71	A
	7+9+9	7	9	9	1.84	2.38	2.38	2.39	6.60	7.26	0.35	1.82	2.80	3.71	A
	9+9+9	9	9	9	2.20	2.20	2.20	2.39	6.60	7.26	0.35	1.82	2.80	3.71	A

MULTI SPLIT INVERTER 50HZ R-410A

Multi DC Inverter Combination Table

YU3E27YEEBXEO-3

COOLING

Comb.	Indoor Units	Combinations (x1000 Btu/h)			Rated Capacity (kW)(Nom. cooling)			Total Cooling Capacity (kW)			Total Power Input (kW)			EER (W/W)	Energy Class
		Unit A	Unit B	Unit C	Unit A	Unit B	Unit C	Min.	Rated	Max.	Min.	Rated	Max.		
1 to 1	18	18	-	-	5.30	-	-	1.84	5.30	5.50	0.32	1.65	2.40	3.23	A
	24	24	-	-	7.00	-	-	2.09	7.00	7.50	0.70	2.57	2.88	2.72	D
1 to 2	7+7	7	7	-	2.05	2.05	-	2.00	4.10	6.30	0.56	1.27	2.19	3.23	A
	7+9	7	9	-	2.01	2.59	-	2.00	4.60	6.72	0.56	1.42	2.20	3.23	A
	7+12	7	12	-	1.99	3.41	-	2.00	5.40	7.13	0.56	1.67	2.45	3.23	A
	7+18	7	18	-	1.79	4.61	-	2.00	6.40	7.90	0.56	1.98	2.71	3.23	A
	9+9	9	9	-	2.65	2.65	-	2.00	5.30	7.13	0.56	1.64	2.45	3.23	A
	9+12	9	12	-	2.70	3.60	-	2.00	6.30	7.50	0.56	1.95	2.57	3.23	A
	9+18	9	18	-	2.25	4.55	-	2.00	6.80	7.90	0.56	2.11	2.98	3.23	A
	12+12	12	12	-	3.20	3.20	-	2.00	6.40	7.66	0.56	1.98	2.65	3.23	A
	12+18	12	18	-	2.45	4.35	-	2.00	6.80	7.90	0.56	2.11	2.98	3.23	A
	7+7+7	7	7	7	2.40	2.40	2.40	2.30	7.20	8.69	0.56	2.24	3.40	3.21	A
1 to 3	7+7+9	7	7	9	2.25	2.25	2.90	2.30	7.40	8.69	0.56	2.31	3.40	3.21	A
	7+7+12	7	7	12	2.13	2.13	3.64	2.30	7.90	8.69	0.56	2.46	3.40	3.21	A
	7+7+18	7	7	18	1.73	1.73	4.44	2.30	7.90	8.69	0.56	2.45	3.40	3.23	A
	7+9+9	7	9	9	2.22	2.84	2.84	2.30	7.90	8.69	0.56	2.46	3.40	3.21	A
	7+9+12	7	9	12	1.98	2.55	3.37	2.30	7.90	8.69	0.56	2.46	3.40	3.21	A
	7+9+18	7	9	18	1.63	2.10	4.17	2.30	7.90	8.69	0.56	2.45	3.40	3.23	A
	7+12+12	7	12	12	1.78	3.06	3.06	2.30	7.90	8.69	0.56	2.45	3.40	3.23	A
	9+9+9	9	9	9	2.55	2.55	2.55	2.30	7.90	8.69	0.56	2.46	3.40	3.21	A
	9+9+12	9	9	12	2.37	2.37	3.16	2.30	7.90	8.69	0.56	2.46	3.40	3.23	A
	9+12+12	9	12	12	2.16	2.87	2.87	2.30	7.90	8.69	0.56	2.46	3.40	3.23	A

HEATING

Comb.	Indoor Units	Combinations (x1000 Btu/h)			Rated Capacity (kW)(Nom. heating)			Total Heating Capacity (kW)			Total Power Input (kW)			COP (W/W)	Energy Class
		Unit A	Unit B	Unit C	Unit A	Unit B	Unit C	Min.	Rated	Max.	Min.	Rated	Max.		
1 to 1	18	18	-	-	5.40	-	-	1.86	5.40	5.60	0.51	1.54	2.10	3.50	B
	24	24	-	-	7.30	-	-	2.09	7.30	8.00	0.70	2.20	2.20	3.32	C
1 to 2	7+7	7	7	-	2.50	2.50	-	2.30	5.00	6.55	0.45	1.41	1.93	3.55	B
	7+9	7	9	-	2.45	3.15	-	2.30	5.60	6.97	0.45	1.58	2.03	3.55	B
	7+12	7	12	-	2.17	3.73	-	2.30	5.90	7.35	0.45	1.64	2.28	3.61	A
	7+18	7	18	-	1.96	5.04	-	2.30	7.00	8.18	0.45	1.94	2.51	3.61	A
	9+9	9	9	-	2.95	2.95	-	2.30	5.90	7.38	0.45	1.64	2.27	3.61	A
	9+12	9	12	-	2.70	3.60	-	2.30	6.30	7.80	0.45	1.75	2.38	3.61	A
	9+18	9	18	-	2.45	4.55	-	2.30	7.00	8.20	0.45	1.94	2.50	3.61	A
	12+12	12	12	-	3.25	3.25	-	2.30	6.50	7.95	0.45	1.75	2.45	3.61	A
	12+18	12	18	-	2.71	4.35	-	2.30	7.00	8.20	0.45	1.94	2.89	3.61	A
	7+7+7	7	7	7	2.27	2.27	2.27	2.45	6.80	9.02	0.56	1.88	3.40	3.61	A
1 to 3	7+7+9	7	7	9	2.13	2.13	2.74	2.45	7.00	9.02	0.56	1.94	3.40	3.61	A
	7+7+12	7	7	12	2.11	2.11	3.62	2.45	7.85	9.02	0.56	2.17	3.40	3.61	A
	7+7+18	7	7	18	1.82	1.82	4.66	2.45	8.30	9.02	0.56	2.29	3.40	3.63	A
	7+9+9	7	9	9	2.19	2.83	2.83	2.45	7.85	9.02	0.56	2.17	3.40	3.61	A
	7+9+12	7	9	12	2.06	2.63	3.51	2.45	8.20	9.02	0.56	2.27	3.40	3.61	A
	7+9+18	7	9	18	1.72	2.19	4.39	2.45	8.30	9.02	0.56	2.29	3.40	3.62	A
	7+12+12	7	12	12	1.88	3.21	3.21	2.45	8.30	9.02	0.56	2.30	3.40	3.61	A
	9+9+9	9	9	9	2.65	2.65	2.65	2.45	8.20	9.02	0.56	2.27	3.40	3.61	A
	9+9+12	9	9	12	2.49	2.49	3.32	2.45	8.30	9.02	0.56	2.29	3.4	3.61	A
	9+12+12	9	12	12	2.26	3.02	3.02	2.45	8.30	9.02	0.56	2.27	3.4	3.63	A

MULTI SPLIT INVERTER 50HZ R-410A

Multi DC Inverter Combination Table

YU4E36YEEBXEO-3

COOLING

Comb.	Indoor Units	Combinations (x1000 Btu/h)				Rated Capacity (kW)(Nom. Cooling)				Total Cooling Capacity (kW)			Total Power Input (kW)			EER (W/W)	Energy Class
		Unit A	Unit B	Unit C	Unit D	Unit A	Unit B	Unit C	Unit D	Min.	Rated	Max.	Min.	Rated	Max.		
1 to 1	24	24	-	-	-	7.00	-	-	-	2.23	7.00	7.50	0.62	2.24	2.35	3.13	B
	7+7	7	7	-	-	2.10	2.10	-	-	2.23	4.20	6.35	0.74	1.34	2.16	3.13	B
	7+9	7	9	-	-	2.06	2.64	-	-	2.23	4.70	6.57	0.74	1.50	2.32	3.13	B
	7+12	7	12	-	-	2.03	3.47	-	-	2.23	5.50	6.90	0.74	1.76	2.34	3.13	B
	7+18	7	18	-	-	1.96	5.04	-	-	2.23	7.00	8.48	0.74	2.24	2.49	3.13	B
	7+24	7	24	-	-	2.03	6.97	-	-	2.23	9.00	9.54	0.74	2.89	3.13	3.11	B
	9+9	9	9	-	-	2.65	2.65	-	-	2.23	5.30	6.90	0.74	1.69	2.49	3.13	B
	9+12	9	12	-	-	2.57	3.43	-	-	2.23	6.00	7.42	0.74	1.92	2.66	3.13	B
	9+18	9	18	-	-	2.47	4.93	-	-	2.23	7.40	9.54	0.74	2.36	3.00	3.13	B
	9+24	9	24	-	-	2.59	6.91	-	-	2.23	9.50	10.07	0.74	3.05	3.19	3.11	B
1 to 2	12+12	12	12	-	-	3.50	3.50	-	-	2.23	7.00	7.95	0.74	2.24	2.84	3.13	B
	12+18	12	18	-	-	3.44	5.16	-	-	2.23	8.60	10.07	0.74	2.78	2.99	3.09	B
	12+24	12	24	-	-	3.33	6.67	-	-	2.23	10.00	10.60	0.74	3.44	3.26	2.91	C
	18+18	18	18	-	-	5.00	5.00	-	-	2.23	10.00	10.60	0.74	3.24	3.32	3.09	B
	7+7+7	7	7	7	-	2.00	2.00	2.00	-	2.39	6.00	7.24	0.90	1.91	2.79	3.14	B
	7+7+9	7	7	9	-	1.98	1.98	2.54	-	2.39	6.50	7.85	0.90	2.08	2.97	3.12	B
	7+7+12	7	7	12	-	2.02	2.02	3.46	-	2.39	7.50	8.80	0.90	2.42	3.17	3.10	B
	7+7+18	7	7	18	-	1.97	1.97	5.06	-	2.39	9.00	11.00	0.90	2.91	3.43	3.09	B
	7+7+24	7	7	24	-	1.84	1.84	6.32	-	2.86	10.00	11.66	0.94	3.44	3.66	2.91	C
	7+9+9	7	9	9	-	1.96	2.52	2.52	-	2.39	7.00	8.50	0.90	2.24	3.13	3.12	B
1 to 3	7+9+12	7	9	12	-	2.00	2.57	3.43	-	2.39	8.00	9.62	0.90	2.58	3.25	3.10	B
	7+9+18	7	9	18	-	1.96	2.51	5.03	-	2.39	9.50	11.00	0.90	3.07	3.43	3.09	B
	7+9+24	7	9	24	-	1.75	2.25	6.00	-	2.86	10.00	11.66	0.94	3.44	3.66	2.91	C
	7+12+12	7	12	12	-	2.03	3.48	3.48	-	2.39	9.00	11.00	0.90	2.91	3.29	3.09	B
	7+12+18	7	12	18	-	1.89	3.24	4.86	-	2.39	10.00	11.00	0.90	3.24	3.43	3.09	B
	7+12+24	7	12	24	-	1.63	2.79	5.58	-	2.86	10.00	11.66	0.94	3.44	3.66	2.91	C
	9+9+9	9	9	9	-	2.50	2.50	2.50	-	2.39	7.50	8.80	0.90	2.43	3.43	3.09	B
	9+9+12	9	9	12	-	2.55	2.55	3.40	-	2.39	8.50	10.06	0.90	2.75	3.43	3.09	B
	9+12+18	9	12	18	-	2.31	3.08	4.62	-	2.39	10.00	11.00	0.90	3.24	3.43	3.09	B
	9+12+24	9	18	18	-	2.00	4.00	4.00	-	2.39	10.00	11.00	0.90	3.24	3.43	3.09	B
1 to 4	12+12+12	12	12	12	-	3.33	3.33	3.33	-	2.39	10.00	11.00	0.90	3.24	3.43	3.09	B
	12+12+18	12	12	18	-	2.86	2.86	4.29	-	2.39	10.00	11.00	0.90	3.24	3.43	3.09	B
	7+7+7+7	7	7	7	7	2.05	2.05	2.05	2.05	2.50	8.20	10.50	0.97	2.65	4.29	3.09	B
	7+7+7+9	7	7	7	9	1.98	1.98	1.98	2.55	2.50	8.50	10.70	0.97	2.85	4.53	2.98	C
	7+7+7+12	7	7	7	12	2.02	2.02	2.02	3.45	2.50	9.50	10.80	0.97	3.36	4.69	2.83	C
	7+7+7+18	7	7	7	18	1.87	1.87	1.87	4.80	2.50	10.40	11.00	0.97	3.91	4.71	2.66	D
	7+7+9+9	7	7	9	9	1.97	1.97	2.53	2.53	2.50	9.00	10.70	0.97	3.33	4.69	2.70	D
	7+7+9+12	7	7	9	12	2.00	2.00	2.57	3.43	2.50	10.00	11.00	0.97	3.76	4.69	2.66	D
	7+7+9+18	7	7	9	18	1.78	1.78	2.28	4.57	2.50	10.40	11.00	0.97	3.91	4.88	2.66	D
	7+7+12+12	7	7	12	12	1.92	1.92	3.28	3.28	2.50	10.40	11.00	0.97	3.91	4.88	2.66	D
1 to 4	7+7+12+18	7	7	12	18	1.65	1.65	2.84	4.25	2.50	10.40	11.00	0.97	3.91	4.88	2.66	D
	7+9+9+9	7	9	9	9	1.96	2.51	2.51	2.51	2.50	9.50	10.80	0.97	3.57	4.71	2.66	D
	7+9+9+12	7	9	9	12	1.99	2.55	2.55	3.41	2.50	10.50	11.00	0.97	3.95	4.93	2.66	D
	7+9+9+18	7	9	9	18	1.71	2.20	2.20	4.40	2.50	10.50	11.00	0.97	3.95	4.93	2.66	D
	7+9+12+18	7	9	12	18	1.60	2.05	2.74	4.11	2.50	10.50	11.00	0.97	3.95	4.93	2.66	D
	7+12+12+12	7	12	12	12	1.71	2.93	2.93	2.93	2.50	10.50	11.00	0.97	3.95	4.93	2.66	D
	9+9+9+9	9	9	9	9	2.63	2.63	2.63	2.63	2.50	10.50	11.00	0.97	3.95	4.93	2.66	D
	9+9+9+12	9	9	9	12	2.42	2.42	2.42	3.23	2.50	10.50	11.00	0.97	3.95	4.93	2.66	D
	9+9+9+18	9	9	9	18	2.10	2.10	2.10	4.20	2.50	10.50	11.00	0.97	3.95	4.93	2.66	D
	9+9+12+12	9	9	12	12	2.25	2.25	3.00	3.00	2.50	10.50	11.00	0.97	3.95	4.93	2.66	D
9+12+12+12	9	12	12	12	2.10	2.80	2.80	2.80	2.50	10.50	11.00	0.97	3.95	4.93	2.66	D	

MULTI SPLIT INVERTER 50HZ R-410A

Multi DC Inverter Combination Table

YU4E36YEEBXEO-3

HEATING

Comb.	Indoor Units	Combinations (x1000 Btu/h)				Rated Capacity (kW)(Nom. Heating)				Total Heating Capacity (kW)			Total Power Input (kW)			COP (W/W)	Energy Class
		Unit A	Unit B	Unit C	Unit D	Unit A	Unit B	Unit C	Unit D	Min.	Rated	Max.	Min.	Rated	Max.		
1 to 1	24	24	-	-	-	7.30	-	-	-	1.89	7.30	8.00	0.58	1.98	2.28	3.69	A
	7+7	7	7	-	-	2.50	2.50	-	-	2.33	5.00	6.51	0.57	1.36	1.67	3.69	A
	7+9	7	9	-	-	2.45	3.15	-	-	2.33	5.60	6.80	0.57	1.52	1.81	3.69	A
	7+12	7	12	-	-	2.21	3.79	-	-	2.33	6.00	7.13	0.57	1.63	1.95	3.69	A
	7+18	7	18	-	-	2.18	5.62	-	-	2.33	7.80	8.10	0.57	2.11	2.38	3.69	A
	7+24	7	24	-	-	2.17	7.03	-	-	2.33	9.20	10.37	0.57	2.49	2.81	3.69	A
	9+9	9	9	-	-	3.00	3.00	-	-	2.33	6.00	7.30	0.57	1.63	1.95	3.69	A
	9+12	9	12	-	-	3.00	4.00	-	-	2.33	7.00	7.50	0.57	1.90	2.27	3.69	A
	9+18	9	18	-	-	2.63	5.27	-	-	2.33	7.90	8.20	0.57	2.14	2.41	3.69	A
	9+24	9	24	-	-	2.67	6.92	-	-	2.33	9.59	10.35	0.57	2.65	2.84	3.70	A
1 to 2	12+12	12	12	-	-	4.25	4.25	-	-	2.33	8.50	9.30	0.57	2.30	2.72	3.69	A
	12+18	12	18	-	-	3.60	5.40	-	-	2.33	9.00	11.10	0.57	2.44	2.99	3.69	A
	12+24	12	24	-	-	3.33	6.67	-	-	2.33	10.00	10.88	0.57	2.70	2.93	3.70	A
	18+18	18	18	-	-	5.05	5.05	-	-	2.33	10.10	11.10	0.57	2.74	2.99	3.69	A
	7+7+7	7	7	7	-	2.50	2.50	2.50	-	2.53	7.50	11.15	0.63	2.11	2.34	3.56	B
	7+7+9	7	7	9	-	2.95	2.95	3.80	-	2.53	9.70	11.15	0.63	2.72	2.97	3.56	B
	7+7+12	7	7	12	-	2.77	2.77	4.75	-	2.53	10.30	11.15	0.63	2.89	3.12	3.56	B
	7+7+18	7	7	18	-	2.30	2.30	5.91	-	2.53	10.50	11.15	0.63	2.95	3.24	3.56	B
	7+7+24	7	7	24	-	1.97	1.97	6.76	-	3.00	10.70	12.21	0.72	2.88	3.29	3.71	A
	7+9+9	7	9	9	-	2.88	3.71	3.71	-	2.53	10.30	11.15	0.63	2.89	3.12	3.56	B
1 to 3	7+9+12	7	9	12	-	2.60	3.34	4.46	-	2.53	10.40	11.15	0.63	2.92	3.24	3.56	B
	7+9+18	7	9	18	-	2.16	2.78	5.56	-	2.53	10.50	11.15	0.63	2.95	3.24	3.56	B
	7+9+24	7	9	24	-	1.87	2.41	6.42	-	3.00	10.70	12.21	0.72	2.88	3.29	3.71	A
	7+12+12	7	12	12	-	2.37	4.06	4.06	-	2.53	10.50	11.15	0.63	2.95	3.24	3.56	B
	7+12+18	7	12	18	-	1.99	3.41	5.11	-	2.53	10.50	11.15	0.63	2.95	3.24	3.56	B
	7+12+24	7	12	24	-	1.74	2.99	5.97	-	3.00	10.70	12.21	0.72	2.89	3.29	3.70	A
	9+9+9	9	9	9	-	3.50	3.50	3.50	-	2.53	10.50	11.15	0.63	2.95	3.24	3.56	B
	9+9+12	9	9	12	-	3.15	3.15	4.20	-	2.53	10.50	11.15	0.63	2.95	3.24	3.56	B
	9+12+18	9	12	18	-	2.42	3.23	4.85	-	2.53	10.50	11.15	0.63	2.95	3.24	3.56	B
	9+12+24	9	18	18	-	2.14	2.85	5.71	-	3.00	10.70	12.21	0.72	2.89	3.29	3.70	A
1 to 4	12+12+12	12	12	12	-	3.50	3.50	3.50	-	2.53	10.50	11.15	0.63	2.95	3.24	3.56	B
	12+12+18	12	12	18	-	3.00	3.00	4.50	-	2.53	10.50	11.15	0.63	2.95	3.24	3.56	B
	7+7+7+7	7	7	7	7	2.53	2.53	2.53	2.53	2.67	10.10	10.70	0.73	2.78	3.26	3.63	A
	7+7+7+9	7	7	7	9	2.36	2.36	2.36	3.03	2.67	10.10	10.80	0.73	2.87	3.35	3.52	B
	7+7+7+12	7	7	7	12	2.29	2.29	2.29	3.93	2.67	10.80	10.90	0.73	3.08	3.68	3.51	B
	7+7+7+18	7	7	7	18	1.97	1.97	1.97	5.08	2.67	11.00	11.20	0.73	3.15	3.85	3.49	B
	7+7+9+9	7	7	9	9	2.36	2.36	3.04	3.04	2.67	10.80	10.90	0.73	3.07	3.67	3.52	B
	7+7+9+12	7	7	9	12	2.20	2.20	2.83	3.77	2.67	11.00	11.20	0.73	3.15	3.85	3.49	B
	7+7+9+18	7	7	9	18	1.88	1.88	2.41	4.83	2.67	11.00	11.20	0.73	3.15	3.85	3.49	B
	7+7+12+12	7	7	12	12	2.03	2.03	3.47	3.47	2.67	11.00	11.20	0.73	3.15	3.85	3.49	B
1 to 4	7+7+12+18	7	7	12	18	1.75	1.75	3.00	4.50	2.67	11.00	11.20	0.73	3.15	3.85	3.49	B
	7+9+9+9	7	9	9	9	2.26	2.91	2.91	2.91	2.67	11.00	11.20	0.73	3.13	3.71	3.52	B
	7+9+9+12	7	9	9	12	2.08	2.68	2.68	3.57	2.67	11.00	11.20	0.73	3.15	3.85	3.49	B
	7+9+9+18	7	9	9	18	1.79	2.30	2.30	4.60	2.67	11.00	11.20	0.73	3.15	3.85	3.49	B
	7+9+12+18	7	9	12	18	1.93	2.48	3.30	3.30	2.67	11.00	11.20	0.73	3.15	3.85	3.49	B
	7+12+12+12	7	12	12	12	1.79	3.07	3.07	3.07	2.67	11.00	11.20	0.73	3.15	3.85	3.49	B
	9+9+9+9	9	9	9	9	2.75	2.75	2.75	2.75	2.67	11.00	11.20	0.73	3.15	3.85	3.49	B
	9+9+9+12	9	9	9	12	2.54	2.54	2.54	3.38	2.67	11.00	11.20	0.73	3.15	3.85	3.49	B
	9+9+9+18	9	9	9	18	2.20	2.20	2.20	4.40	2.67	11.00	11.20	0.73	3.15	3.85	3.49	B
	9+9+12+12	9	9	12	12	2.36	2.36	3.14	3.14	2.67	11.00	11.20	0.73	3.15	3.85	3.49	B
9+12+12+12	9	12	12	12	2.20	2.93	2.93	2.93	2.67	11.00	11.20	0.73	3.15	3.85	3.49	B	

MULTI SPLIT INVERTER 50HZ R-410A

Multi DC Inverter Combination Table

YU5E42YEEXEO-3

COOLING

Comb.	Indoor Units	Combinations (x1000 Btu/h)					Rated Capacity (kW)(Nom. Cooling)					Total Cooling Capacity (kW)			Total Power Input (kW)			EER (W/W)	Energy Class
		Unit A	Unit B	Unit C	Unit D	Unit E	Unit A	Unit B	Unit C	Unit D	Unit E	Min.	Rated	Max.	Min.	Rated	Max.		
1 to 1	24	24	-	-	-	-	7.00	-	-	-	-	2.09	7.00	7.50	0.70	2.68	2.88	2.61	D
	7+7	7	7	-	-	-	2.10	2.10	-	-	-	2.34	4.20	6.35	0.65	1.61	1.78	2.61	D
	7+9	7	9	-	-	-	2.06	2.64	-	-	-	2.34	4.70	6.57	0.65	1.80	1.99	2.61	D
	7+12	7	12	-	-	-	2.03	3.47	-	-	-	2.34	5.50	6.90	0.65	2.11	2.27	2.61	D
	7+18	7	18	-	-	-	1.96	5.04	-	-	-	2.34	7.00	8.48	0.65	2.68	2.88	2.61	D
	7+24	7	24	-	-	-	2.05	6.95	-	-	-	2.34	9.00	11.69	0.65	3.45	3.06	2.61	D
	9+9	9	9	-	-	-	2.65	2.65	-	-	-	2.34	5.30	6.90	0.65	2.03	2.18	2.61	D
	9+12	9	12	-	-	-	2.57	3.43	-	-	-	2.34	6.00	7.42	0.65	2.30	2.42	2.61	D
	9+18	9	18	-	-	-	2.47	4.93	-	-	-	2.34	7.40	9.54	0.65	2.89	3.02	2.56	E
	9+24	9	24	-	-	-	2.65	6.95	-	-	-	2.34	9.60	12.30	0.65	3.68	3.79	2.61	D
	12+12	12	12	-	-	-	3.50	3.50	-	-	-	2.34	7.00	7.95	0.65	2.68	2.75	2.61	D
	12+18	12	18	-	-	-	3.44	5.16	-	-	-	2.34	8.60	10.07	0.65	3.35	3.44	2.56	E
	12+24	12	24	-	-	-	3.33	6.67	-	-	-	2.34	10.00	12.30	0.65	3.91	3.99	2.56	E
	18+18	18	18	-	-	-	5.25	5.25	-	-	-	2.34	10.00	12.30	0.65	3.90	3.44	2.56	E
18+24	18	24	-	-	-	4.93	6.57	-	-	-	2.34	11.50	12.50	0.65	4.49	4.55	2.56	E	
1 to 2	7+7+7	7	7	7	-	-	2.00	2.00	2.00	-	-	2.51	6.00	7.20	0.67	2.17	3.06	2.76	D
	7+7+9	7	7	9	-	-	1.98	1.98	2.54	-	-	2.51	6.50	7.83	0.67	2.36	3.25	2.76	D
	7+7+12	7	7	12	-	-	2.02	2.02	3.46	-	-	2.51	7.50	8.46	0.67	2.72	3.43	2.76	D
	7+7+18	7	7	18	-	-	1.97	1.97	5.06	-	-	2.51	9.00	11.00	0.67	3.28	3.61	2.74	D
	7+7+24	7	7	24	-	-	2.03	2.03	6.95	-	-	2.89	11.00	12.92	0.80	3.99	4.02	2.76	D
	7+9+9	7	9	9	-	-	1.96	2.52	2.52	-	-	2.51	7.00	8.15	0.67	2.54	3.36	2.76	D
	7+9+12	7	9	12	-	-	2.00	2.57	3.43	-	-	2.51	8.00	9.23	0.67	2.90	3.51	2.76	D
	7+9+18	7	9	18	-	-	1.96	2.51	5.03	-	-	2.51	9.50	11.30	0.67	3.47	3.72	2.74	D
	7+9+24	7	9	24	-	-	2.01	2.59	6.90	-	-	2.89	11.50	12.92	0.80	4.18	4.28	2.75	D
	7+12+12	7	12	12	-	-	2.03	3.48	3.48	-	-	2.51	9.00	11.00	0.67	3.28	3.61	2.74	D
	7+12+18	7	12	18	-	-	1.97	3.37	5.06	-	-	2.51	10.40	11.47	0.67	3.81	3.83	2.73	D
	7+12+24	7	12	24	-	-	1.87	3.21	6.42	-	-	2.89	11.50	12.92	0.80	4.17	4.28	2.76	D
	7+18+18	7	18	18	-	-	1.86	4.77	4.77	-	-	2.51	11.40	12.50	0.67	4.18	4.29	2.73	D
	1 to 3	9+9+9	9	9	9	-	-	2.67	2.67	2.67	-	-	2.51	8.00	9.23	0.67	2.90	3.51	2.76
9+9+12		9	9	12	-	-	2.70	2.70	3.60	-	-	2.51	9.00	11.00	0.67	3.28	3.61	2.74	D
9+9+18		9	9	18	-	-	2.60	2.60	5.20	-	-	2.51	10.40	11.47	0.67	3.81	3.83	2.73	D
9+9+24		9	9	24	-	-	2.46	2.46	6.57	-	-	2.89	11.50	12.92	0.80	4.17	4.28	2.76	D
9+12+12		9	12	12	-	-	2.45	3.27	3.27	-	-	2.51	9.00	11.00	0.67	3.28	3.61	2.74	D
9+12+18		9	12	18	-	-	2.58	3.45	5.17	-	-	2.51	11.20	12.70	0.67	4.10	4.21	2.73	D
9+12+24		9	12	24	-	-	2.30	3.07	6.13	-	-	2.89	11.50	12.92	0.80	4.17	4.28	2.76	D
9+18+18		9	18	18	-	-	2.34	4.68	4.68	-	-	2.51	11.70	12.70	0.67	4.32	4.35	2.71	D
12+12+12		12	12	12	-	-	3.90	3.90	3.90	-	-	2.51	11.70	12.70	0.67	4.27	4.28	2.74	D
12+12+18		12	12	18	-	-	3.34	3.34	5.01	-	-	2.51	11.70	12.70	0.67	4.29	4.33	2.73	D
12+12+24		12	12	24	-	-	3.00	3.00	6.00	-	-	2.89	12.00	12.92	0.80	4.40	4.45	2.73	D
12+18+18		12	18	18	-	-	2.93	4.39	4.39	-	-	2.51	11.70	12.70	0.67	4.32	4.35	2.71	D
12+18+24		12	18	24	-	-	2.67	4.00	5.33	-	-	2.89	12.00	12.92	0.80	4.40	4.45	2.73	D
18+18+18		18	18	18	-	-	3.90	3.90	3.90	-	-	2.51	11.70	12.70	0.67	4.32	4.35	2.71	D

MULTI SPLIT INVERTER 50HZ R-410A

Multi DC Inverter Combination Table

YU5E42YEEBXEO-3

COOLING

Comb.	Indoor Units	Combinations (x1000 Btu/h)					Rated Capacity (kW)(Nom. Cooling)					Total Cooling Capacity (kW)			Total Power Input (kW)			EER (W/W)	Energy Class
		Unit A	Unit B	Unit C	Unit D	Unit E	Unit A	Unit B	Unit C	Unit D	Unit E	Min.	Rated	Max.	Min.	Rated	Max.		
1 to 4	7+7+7+7	7	7	7	7	-	2.00	2.00	2.00	2.00	-	2.63	8.00	10.30	0.71	2.96	3.00	2.70	D
	7+7+7+9	7	7	7	9	-	1.98	1.98	1.98	2.55	-	2.63	8.50	10.80	0.71	3.15	3.35	2.70	D
	7+7+7+12	7	7	7	12	-	2.02	2.02	2.02	3.45	-	2.63	9.50	11.20	0.71	3.52	3.71	2.70	D
	7+7+7+18	7	7	7	18	-	2.06	2.06	2.06	5.31	-	2.63	11.50	12.10	0.71	4.26	4.48	2.70	D
	7+7+7+24	7	7	7	24	-	1.87	1.87	1.87	6.40	-	3.69	12.00	13.53	0.92	4.44	4.46	2.70	D
	7+7+9+9	7	7	9	9	-	2.08	2.08	2.67	2.67	-	2.63	9.50	11.20	0.71	3.52	3.85	2.70	D
	7+7+9+12	7	7	9	12	-	2.00	2.00	2.57	3.43	-	2.63	10.00	11.50	0.71	3.70	3.91	2.70	D
	7+7+9+18	7	7	9	18	-	1.96	1.96	2.52	5.05	-	2.63	11.50	12.10	0.71	4.26	4.48	2.70	D
	7+7+9+24	7	7	9	24	-	1.79	1.79	2.30	6.13	-	3.69	12.00	13.53	0.92	4.44	4.46	2.70	D
	7+7+12+12	7	7	12	12	-	1.93	1.93	3.32	3.32	-	2.63	10.50	11.80	0.71	3.89	4.08	2.70	D
	7+7+12+18	7	7	12	18	-	1.83	1.83	3.14	4.70	-	2.63	11.50	12.10	0.71	4.26	4.48	2.70	D
	7+7+12+24	7	7	12	24	-	1.72	1.72	2.95	5.90	-	3.69	12.30	13.53	0.92	4.56	4.66	2.70	D
	7+9+9+9	7	9	9	9	-	2.06	2.65	2.65	2.65	-	2.63	10.00	11.50	0.71	3.70	3.91	2.70	D
	7+9+9+12	7	9	9	12	-	1.99	2.55	2.55	3.41	-	2.63	10.50	11.80	0.71	3.89	4.08	2.70	D
	7+9+9+18	7	9	9	18	-	1.87	2.41	2.41	4.81	-	2.63	11.50	12.10	0.71	4.26	5.07	2.70	D
	7+9+12+18	7	9	12	18	-	1.83	2.35	3.13	4.70	-	2.63	12.00	12.70	0.71	4.44	5.07	2.70	D
	7+9+12+24	7	9	12	24	-	1.66	2.13	2.84	5.68	-	3.69	12.30	13.53	0.92	4.56	4.66	2.70	D
	7+12+12+12	7	12	12	12	-	1.87	3.21	3.21	3.21	-	2.63	11.50	12.10	0.71	4.26	5.07	2.70	D
	9+9+9+9	9	9	9	9	-	2.63	2.63	2.63	2.63	-	2.63	10.50	11.80	0.71	3.89	5.07	2.70	D
	9+9+9+12	9	9	9	12	-	2.65	2.65	2.65	3.54	-	2.63	11.50	12.10	0.71	4.26	5.07	2.70	D
9+9+9+18	9	9	9	18	-	2.40	2.40	2.40	4.80	-	2.63	12.00	12.70	0.71	4.44	5.07	2.70	D	
9+9+12+12	9	9	12	12	-	2.46	2.46	3.29	3.29	-	2.63	11.50	12.10	0.71	4.26	5.07	2.70	D	
9+12+12+12	9	12	12	12	-	2.30	3.07	3.07	3.07	-	2.63	11.50	12.10	0.71	4.26	5.07	2.70	D	
12+12+12+12	12	12	12	12	-	3.00	3.00	3.00	3.00	-	2.63	12.00	12.70	0.71	4.44	5.07	2.70	D	
1 to 5	7+7+7+7+7	7	7	7	7	7	2.10	2.10	2.10	2.10	2.10	2.77	10.50	12.70	0.75	3.89	5.45	2.70	D
	7+7+7+7+9	7	7	7	7	9	2.08	2.08	2.08	2.08	2.68	2.77	11.00	12.70	0.75	4.08	5.45	2.70	D
	7+7+7+7+12	7	7	7	7	12	2.01	2.01	2.01	2.01	3.45	2.77	11.50	12.70	0.75	4.26	5.45	2.70	D
	7+7+7+7+18	7	7	7	7	18	1.83	1.83	1.83	1.83	4.70	2.77	12.00	12.70	0.75	4.45	5.45	2.70	D
	7+7+7+9+9	7	7	7	9	9	2.15	2.15	2.15	2.77	2.77	2.77	12.00	12.70	0.75	4.45	5.45	2.70	D
	7+7+7+9+12	7	7	7	9	12	2.00	2.00	2.00	2.57	3.43	2.77	12.00	12.70	0.75	4.45	5.45	2.70	D
	7+7+7+9+18	7	7	7	9	18	1.75	1.75	1.75	2.25	4.50	2.77	12.00	12.70	0.75	4.45	5.45	2.70	D
	7+7+7+12+12	7	7	7	12	12	1.87	1.87	1.87	3.20	3.20	2.77	12.00	12.70	0.75	4.45	5.45	2.70	D
	7+7+7+12+18	7	7	7	12	18	1.65	1.65	1.65	2.82	4.24	2.77	12.00	12.70	0.75	4.45	5.45	2.70	D
	7+7+9+9+9	7	7	9	9	9	2.05	2.05	2.63	2.63	2.63	2.77	12.00	12.70	0.75	4.45	5.45	2.70	D
	7+7+9+9+12	7	7	9	9	12	1.91	1.91	2.45	2.45	3.27	2.77	12.00	12.70	0.75	4.45	5.45	2.70	D
	7+7+9+9+18	7	7	9	9	18	1.68	1.68	2.16	2.16	4.32	2.77	12.00	12.70	0.75	4.45	5.45	2.70	D
	7+7+9+12+12	7	7	9	12	12	1.79	1.79	2.30	3.06	3.06	2.77	12.00	12.70	0.75	4.45	5.45	2.70	D
	7+7+9+12+18	7	7	9	12	18	1.58	1.58	2.04	2.72	4.08	2.77	12.00	12.70	0.75	4.45	5.45	2.70	D
	7+7+12+12+12	7	7	12	12	12	1.68	1.68	2.88	2.88	2.88	2.77	12.00	12.70	0.75	4.45	5.45	2.70	D
	7+9+9+9+9	7	9	9	9	9	1.95	2.51	2.51	2.51	2.51	2.77	12.00	12.70	0.75	4.45	5.45	2.70	D
	7+9+9+9+12	7	9	9	9	12	1.83	2.35	2.35	2.35	3.13	2.77	12.00	12.70	0.75	4.45	5.45	2.70	D
	7+9+9+9+18	7	9	9	9	18	1.62	2.08	2.08	2.08	4.15	2.77	12.00	12.70	0.75	4.45	5.45	2.70	D
	7+9+9+12+12	7	9	9	12	12	1.71	2.20	2.20	2.94	2.94	2.77	12.00	12.70	0.75	4.45	5.45	2.70	D
	7+9+12+12+12	7	9	12	12	12	1.62	2.08	2.77	2.77	2.77	2.77	12.00	12.70	0.75	4.45	5.45	2.70	D
9+9+9+9+9	9	9	9	9	9	2.40	2.40	2.40	2.40	2.40	2.77	12.00	12.70	0.75	4.45	5.45	2.70	D	
9+9+9+9+12	9	9	9	9	12	2.25	2.25	2.25	2.25	3.00	2.77	12.00	12.70	0.75	4.45	5.45	2.70	D	
9+9+9+9+18	9	9	9	9	18	2.00	2.00	2.00	2.00	4.00	2.77	12.00	12.70	0.75	4.45	5.45	2.70	D	
9+9+9+12+12	9	9	9	12	12	2.12	2.12	2.12	2.82	2.82	2.77	12.00	12.70	0.75	4.45	5.45	2.70	D	
9+9+12+12+12	9	9	12	12	12	2.00	2.00	2.67	2.67	2.67	2.77	12.00	12.70	0.75	4.45	5.45	2.70	D	

MULTI SPLIT INVERTER 50HZ R-410A

Multi DC Inverter Combination Table

YU5E42YEEXEO-3

HEATING

Comb.	Indoor Units	Combinations (x1000 Btu/h)					Rated Capacity (kW)(Nom. Heating)					Total Heating Capacity (kW)			Total Power Input (kW)			COP (W/W)	Energy Class
		Unit A	Unit B	Unit C	Unit D	Unit E	Unit A	Unit B	Unit C	Unit D	Unit E	Min.	Rated	Max.	Min.	Rated	Max.		
1 to 1	24	24	-	-	-	-	7.30	-	-	-	-	2.09	7.30	8.00	0.70	2.02	2.20	3.62	A
	7+7	7	7	-	-	-	2.50	2.50	-	-	-	2.34	5.00	7.20	0.53	1.38	1.97	3.62	A
	7+9	7	9	-	-	-	2.45	3.15	-	-	-	2.34	5.60	7.60	0.53	1.55	2.12	3.62	A
	7+12	7	12	-	-	-	2.21	3.79	-	-	-	2.34	6.00	7.82	0.53	1.66	2.26	3.62	A
	7+18	7	18	-	-	-	2.18	5.62	-	-	-	2.34	7.80	9.00	0.53	2.15	2.38	3.62	A
	7+24	7	24	-	-	-	2.21	7.59	-	-	-	2.34	9.80	11.69	0.57	2.71	2.75	3.62	A
1 to 2	9+9	9	9	-	-	-	3.00	3.00	-	-	-	2.34	6.00	7.82	0.53	1.66	2.26	3.62	A
	9+12	9	12	-	-	-	3.00	4.00	-	-	-	2.34	7.00	8.41	0.53	1.93	2.29	3.62	A
	9+18	9	18	-	-	-	2.63	5.27	-	-	-	2.34	7.90	11.00	0.53	2.18	2.52	3.62	A
	9+24	9	24	-	-	-	2.78	7.42	-	-	-	2.34	10.20	12.30	0.57	2.82	2.86	3.62	A
	12+12	12	12	-	-	-	4.25	4.25	-	-	-	2.34	8.50	9.23	0.53	2.35	2.38	3.62	A
	12+18	12	18	-	-	-	4.00	6.00	-	-	-	2.34	10.00	12.30	0.53	2.62	3.03	3.62	A
	12+24	12	24	-	-	-	3.50	7.00	-	-	-	2.34	10.50	12.30	0.57	2.90	3.03	3.62	A
	18+18	18	18	-	-	-	5.50	5.50	-	-	-	2.34	11.00	12.30	0.53	3.04	3.03	3.62	A
	18+24	18	24	-	-	-	4.93	6.57	-	-	-	2.34	11.50	12.50	0.57	3.18	3.19	3.62	A
	1 to 3	7+7+7	7	7	7	-	-	2.50	2.50	2.50	-	-	2.89	7.50	8.61	0.63	2.07	2.70	3.62
7+7+9		7	7	9	-	-	2.37	2.37	3.05	-	-	2.89	7.80	9.23	0.63	2.15	2.86	3.62	A
7+7+12		7	7	12	-	-	2.29	2.29	3.92	-	-	2.89	8.50	12.93	0.63	2.35	3.03	3.62	A
7+7+18		7	7	18	-	-	2.52	2.52	6.47	-	-	2.89	11.50	12.30	0.63	3.19	3.19	3.61	A
7+7+24		7	7	24	-	-	2.21	2.21	7.58	-	-	2.89	12.00	12.92	0.71	3.31	3.37	3.62	A
7+9+9		7	9	9	-	-	2.38	3.06	3.06	-	-	2.89	8.50	9.84	0.63	2.35	2.97	3.62	A
7+9+12		7	9	12	-	-	2.50	3.21	4.29	-	-	2.89	10.00	12.30	0.63	2.76	3.10	3.62	A
7+9+18		7	9	18	-	-	2.37	3.04	6.09	-	-	2.89	11.50	12.30	0.63	3.19	3.30	3.61	A
7+9+24		7	9	24	-	-	2.10	2.70	7.20	-	-	2.89	12.00	12.92	0.71	3.31	3.50	3.62	A
7+12+12		7	12	12	-	-	2.48	4.26	4.26	-	-	2.89	11.00	12.30	0.63	3.04	3.19	3.62	A
7+12+18		7	12	18	-	-	2.18	3.73	5.59	-	-	2.89	11.50	12.30	0.63	3.19	3.36	3.61	A
7+12+24		7	12	24	-	-	1.95	3.35	6.70	-	-	2.89	12.00	12.92	0.71	3.32	3.50	3.61	A
7+18+18		7	18	18	-	-	1.95	5.02	5.02	-	-	2.89	12.00	12.65	0.63	3.34	3.47	3.59	B
9+9+9		9	9	9	-	-	3.33	3.33	3.33	-	-	2.89	10.00	12.30	0.63	2.76	3.37	3.62	A
9+9+12		9	9	12	-	-	3.30	3.30	4.40	-	-	2.89	11.00	12.30	0.63	3.04	3.19	3.62	A
9+9+18		9	9	18	-	-	2.88	2.88	5.75	-	-	2.89	11.50	12.30	0.63	3.19	3.36	3.61	A
9+9+24		9	9	24	-	-	2.57	2.57	6.86	-	-	2.89	12.00	12.92	0.71	3.32	3.50	3.61	A
9+12+12		9	12	12	-	-	3.14	4.18	4.18	-	-	2.89	11.50	12.65	0.63	3.19	3.19	3.61	A
9+12+18		9	12	18	-	-	2.77	3.69	5.54	-	-	2.89	12.00	13.53	0.63	3.34	3.36	3.59	B
9+12+24		9	12	24	-	-	2.40	3.20	6.40	-	-	2.89	12.00	12.92	0.71	3.34	3.50	3.61	A
9+18+18	9	18	18	-	-	2.40	4.80	4.80	-	-	2.89	12.00	13.53	0.63	3.34	3.47	3.59	B	
12+12+12	12	12	12	-	-	4.00	4.00	4.00	-	-	2.89	12.00	12.93	0.63	3.32	3.47	3.61	A	
12+12+18	12	12	18	-	-	3.43	3.43	5.14	-	-	2.89	12.00	13.53	0.63	3.34	3.47	3.59	B	
12+12+24	12	12	24	-	-	3.00	3.00	6.00	-	-	2.89	12.00	12.92	0.71	3.34	3.50	3.61	A	
12+18+18	12	18	18	-	-	3.00	4.50	4.50	-	-	2.89	12.00	13.53	0.63	3.34	3.47	3.59	B	
12+18+24	12	18	24	-	-	2.67	4.00	5.33	-	-	2.89	12.00	12.92	0.71	3.34	3.50	3.61	A	
18+18+18	18	18	18	-	-	4.00	4.00	4.00	-	-	2.89	12.00	13.53	0.63	3.34	3.47	3.59	B	

MULTI SPLIT INVERTER 50HZ R-410A

Multi DC Inverter Combination Table

YU5E42YEEBXEO-3

HEATING

Comb.	Indoor Units	Combinations (x1000 Btu/h)					Rated Capacity (kW)(Nom. Cooling)					Total Cooling Capacity (kW)			Total Power Input (kW)			EER (W/W)	Energy Class
		Unit A	Unit B	Unit C	Unit D	Unit E	Unit A	Unit B	Unit C	Unit D	Unit E	Min.	Rated	Max.	Min.	Rated	Max.		
1 to 4	7+7+7+7	7	7	7	7	-	2.50	2.50	2.50	2.50	-	3.69	10.00	12.70	0.63	2.82	3.37	3.54	B
	7+7+7+9	7	7	7	9	-	2.57	2.57	2.57	3.30	-	3.69	11.00	12.97	0.63	3.11	3.62	3.54	B
	7+7+7+12	7	7	7	12	-	2.48	2.48	2.48	4.25	-	3.69	11.70	13.53	0.63	3.31	3.84	3.54	B
	7+7+7+18	7	7	7	18	-	2.28	2.28	2.28	5.86	-	3.69	12.70	13.53	0.63	3.59	3.96	3.54	B
	7+7+7+24	7	7	7	24	-	1.91	1.91	1.91	6.56	-	3.69	12.30	13.53	0.81	3.59	3.96	3.62	A
	7+7+9+9	7	7	9	9	-	2.78	2.78	3.57	3.57	-	3.69	12.70	13.53	0.63	3.59	3.96	3.54	B
	7+7+9+12	7	7	9	12	-	2.54	2.54	3.27	4.35	-	3.69	12.70	13.53	0.63	3.59	3.96	3.54	B
	7+7+9+18	7	7	9	18	-	2.17	2.17	2.79	5.58	-	3.69	12.70	13.53	0.63	3.59	3.96	3.53	B
	7+7+9+24	7	7	9	24	-	1.83	1.83	2.36	6.28	-	3.69	12.30	13.53	0.81	3.59	3.96	3.61	A
	7+7+12+12	7	7	12	12	-	2.34	2.34	4.01	4.01	-	3.69	12.70	13.53	0.63	3.59	3.96	3.53	B
	7+7+12+18	7	7	12	18	-	2.02	2.02	3.46	5.20	-	3.69	12.70	13.53	0.63	3.59	3.96	3.53	B
	7+7+12+24	7	7	12	24	-	1.72	1.72	2.95	5.90	-	3.69	12.30	13.53	0.81	3.59	3.96	3.61	A
	7+9+9+9	7	9	9	9	-	2.61	3.36	3.36	3.36	-	3.69	12.70	13.53	0.63	3.59	3.96	3.53	B
	7+9+9+12	7	9	9	12	-	2.40	3.09	3.09	4.12	-	3.69	12.70	13.53	0.63	3.59	3.96	3.53	B
	7+9+9+18	7	9	9	18	-	2.07	2.66	2.66	5.32	-	3.69	12.70	13.53	0.63	3.59	3.96	3.53	B
	7+9+12+18	7	9	12	18	-	1.93	2.48	3.31	4.97	-	3.69	12.70	13.53	0.63	3.59	3.96	3.53	B
	7+9+12+24	7	9	12	24	-	1.66	2.13	2.84	5.68	-	3.69	12.30	13.53	0.81	3.41	3.96	3.61	A
	7+12+12+12	7	12	12	12	-	2.07	3.54	3.54	3.54	-	3.69	12.70	13.53	0.63	3.59	3.96	3.53	B
	9+9+9+9	9	9	9	9	-	3.18	3.18	3.18	3.18	-	3.69	12.70	13.53	0.63	3.59	3.96	3.53	B
	9+9+9+12	9	9	9	12	-	2.93	2.93	2.93	3.91	-	3.69	12.70	13.53	0.63	3.59	3.96	3.53	B
9+9+9+18	9	9	9	18	-	2.54	2.54	2.54	5.08	-	3.69	12.70	13.53	0.63	3.59	3.96	3.53	B	
9+9+12+12	9	9	12	12	-	2.72	2.72	3.63	3.63	-	3.69	12.70	13.53	0.63	3.59	3.96	3.53	B	
9+12+12+12	9	12	12	12	-	2.54	3.39	3.39	3.39	-	3.69	12.70	13.53	0.63	3.59	3.96	3.53	B	
12+12+12+12	12	12	12	12	-	3.18	3.18	3.18	3.18	-	3.69	12.70	13.53	0.63	3.59	3.96	3.53	B	
1 to 5	7+7+7+7+7	7	7	7	7	7	2.60	2.60	2.60	2.60	2.60	2.96	13.00	13.10	0.60	3.75	4.35	3.47	B
	7+7+7+7+9	7	7	7	7	9	2.46	2.46	2.46	2.46	3.16	2.96	13.00	13.10	0.60	3.75	4.35	3.47	B
	7+7+7+7+12	7	7	7	7	12	2.28	2.28	2.28	2.28	3.90	2.96	13.00	13.10	0.60	3.75	4.35	3.47	B
	7+7+7+7+18	7	7	7	7	18	1.98	1.98	1.98	1.98	5.09	2.96	13.00	13.10	0.60	3.75	4.35	3.47	B
	7+7+7+9+9	7	7	7	9	9	2.33	2.33	2.33	3.00	3.00	2.96	13.00	13.10	0.60	3.75	4.35	3.47	B
	7+7+7+9+12	7	7	7	9	12	2.17	2.17	2.17	2.79	3.71	2.96	13.00	13.10	0.60	3.75	4.35	3.47	B
	7+7+7+9+18	7	7	7	9	18	1.90	1.90	1.90	2.44	4.88	2.96	13.00	13.10	0.60	3.70	4.35	3.51	B
	7+7+7+12+12	7	7	7	12	12	2.02	2.02	2.02	3.47	3.47	2.96	13.00	13.10	0.60	3.75	4.35	3.47	B
	7+7+7+12+18	7	7	7	12	18	1.78	1.78	1.78	3.06	4.59	2.96	13.00	13.10	0.60	3.70	4.35	3.51	B
	7+7+9+9+9	7	7	9	9	9	2.22	2.22	2.85	2.85	2.85	2.96	13.00	13.10	0.60	3.75	4.35	3.47	B
	7+7+9+9+12	7	7	9	9	12	2.07	2.07	2.66	2.66	3.55	2.96	13.00	13.10	0.60	3.75	4.35	3.47	B
	7+7+9+9+18	7	7	9	9	18	1.82	1.82	2.34	2.34	4.68	2.96	13.00	13.10	0.60	3.70	4.35	3.51	B
	7+7+9+12+12	7	7	9	12	12	1.94	1.94	2.49	3.32	3.32	2.96	13.00	13.10	0.60	3.75	4.35	3.47	B
	7+7+9+12+18	7	7	9	12	18	1.72	1.72	2.21	2.94	4.42	2.96	13.00	13.10	0.60	3.75	4.35	3.47	B
	7+7+12+12+12	7	7	12	12	12	1.82	1.82	3.12	3.12	3.12	2.96	13.00	13.10	0.60	3.75	4.35	3.47	B
	7+9+9+9+9	7	9	9	9	9	2.12	2.72	2.72	2.72	2.72	2.96	13.00	13.10	0.60	3.75	4.35	3.47	B
	7+9+9+9+12	7	9	9	9	12	1.98	2.54	2.54	2.54	3.39	2.96	13.00	13.10	0.60	3.75	4.35	3.47	B
	7+9+9+9+18	7	9	9	9	18	1.75	2.25	2.25	2.25	4.50	2.96	13.00	13.10	0.60	3.68	4.35	3.53	B
	7+9+9+12+12	7	9	9	12	12	1.86	2.39	2.39	3.18	3.18	2.96	13.00	13.10	0.60	3.68	4.35	3.53	B
	7+9+12+12+12	7	9	12	12	12	1.75	2.25	3.00	3.00	3.00	2.96	13.00	13.10	0.60	3.68	4.35	3.53	B
9+9+9+9+9	9	9	9	9	9	2.60	2.60	2.60	2.60	2.60	2.96	13.00	13.10	0.60	3.75	4.35	3.47	B	
9+9+9+9+12	9	9	9	9	12	2.44	2.44	2.44	2.44	3.25	2.96	13.00	13.10	0.60	3.75	4.35	3.47	B	
9+9+9+9+18	9	9	9	9	18	2.17	2.17	2.17	2.17	4.33	2.96	13.00	13.10	0.60	3.68	4.35	3.53	B	
9+9+9+12+12	9	9	9	12	12	2.29	2.29	2.29	3.06	3.06	2.96	13.00	13.10	0.60	3.70	4.35	3.51	B	
9+9+12+12+12	9	9	12	12	12	2.17	2.17	2.89	2.89	2.89	2.96	13.00	13.10	0.60	3.70	4.35	3.51	B	



INSTALL CONFIDENCE

Johnson Controls, the Johnson Controls logo, YORK are registered trademarks of Johnson Controls, Inc in the United States of America and other countries. Other trademarks used herein may be trademarks or registered trademarks of other companies.

FOR MORE INFORMATION CONTACT JOHNSONCONTROLS.COM

© 2021 Johnson Controls, Inc, P.O. Box 423, Milwaukee, WI 53201, All rights reserved worldwide.

PUBL-6720(0121)