



### Application

- Can be used to transfer clean or slightly dirty water or other liquids similar to water in physical and chemical properties
- Suitable to be immersed in water for lifting water from the well or the pool, and draining water from the basement

### Pump

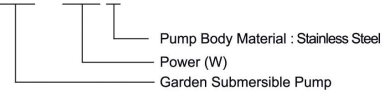
- Stainless steel pump body
- Float switch ensures automatic cut-in and cut-out
- Max. liquid temperature: +35°C
- Max. immersion depth: 7 m
- Max. diameter of particle: 5 mm

### Motor

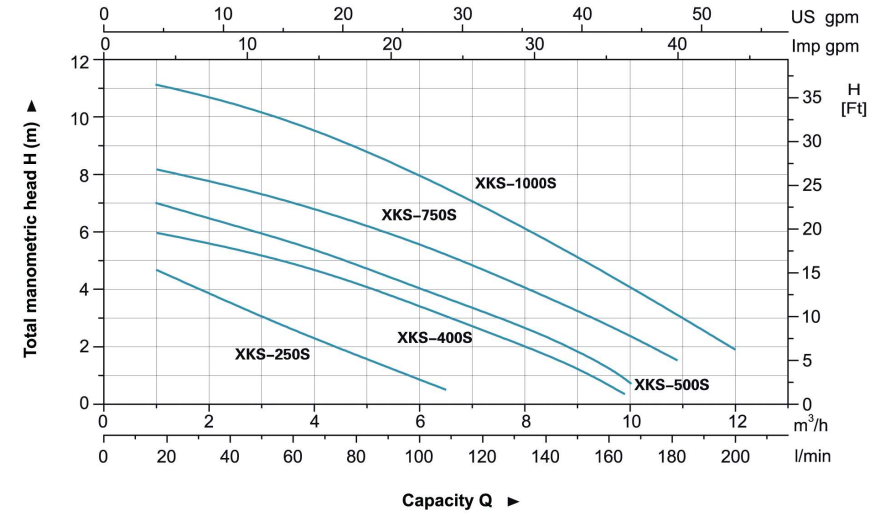
- Motor with aluminum winding
- Built-in thermal protector
- Insulation class: F
- Protection class: IPX8

### Identification Codes

#### XKS - 250 S

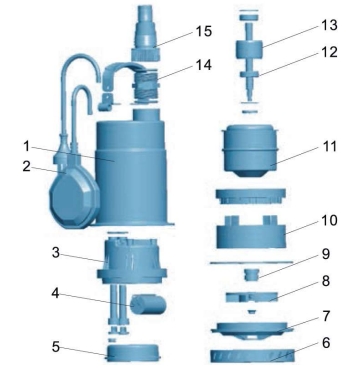


### Hydraulic Performance Curves



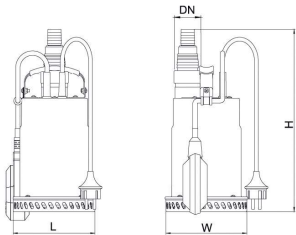
### Materials Table

No.	Part	Material
1	Pump cover	AISI 304
2	Float switch	
3	Upper cover	PP
4	Capacitor	
5	Upper plate	ZL102
6	Pump base	AISI 304
7	Diffuser	PP
8	Impeller	PPO
9	Mechanical seal	Carbon/Ceramic
10	Pump support	ABS
11	Stator	
12	Ball bearing	
13	Rotor	
14	Connector	PP
15	Connector	PP



### Technical Data

MODEL	POWER		Q (m³/h)	H (m)															
	W	HP		0	2	4	6	8	10	12	0	2	4	6	8	10	12		
XKS-250S	250	0.3	H (m)	5.5	3.8	2.3	-	-	-	-	-	-	-	-	-	-	-	-	
XKS-400S	400	0.5		6.3	5.5	4.5	3	2	-	-	-	-	-	-	-	-	-	-	-
XKS-500S	500	0.7		7.5	6.5	5.3	4	2.5	-	-	-	-	-	-	-	-	-	-	-
XKS-750S	750	1		8.5	7.8	6.8	5.5	4	2.3	-	-	-	-	-	-	-	-	-	-
XKS-1000S	1000	1.3		11.5	10.6	9.5	8	6	4	1.9	-	-	-	-	-	-	-	-	-



### Dimension

Model	DN	L (mm)	W (mm)	H (mm)
XKS-250S	32	151	151	323
XKS-400S		151	151	323
XKS-500S		151	151	331
XKS-750S		151	151	347
XKS-1000S		151	151	326

### Package Information

Model	GW (Kgs)	L (mm)	W (mm)	H (mm)	Quantity (PCS/20 TEU)
XKS-250S	4.8	200	150	300	2632
XKS-400S	5.2	200	150	300	2632
XKS-500S	6.2	200	150	300	2632
XKS-750S	7.8	205	155	345	2160
XKS-1000S	7	205	155	345	2256

