



Application

- LSW series submersible sewage pumps are suitable for buildings, hospitals, residential quarters, municipal engineering, road traffic and construction, factory sewage, sewage treatment, and other occasions. It is used to discharge wastewater, rainwater, and sewage containing solid particles.

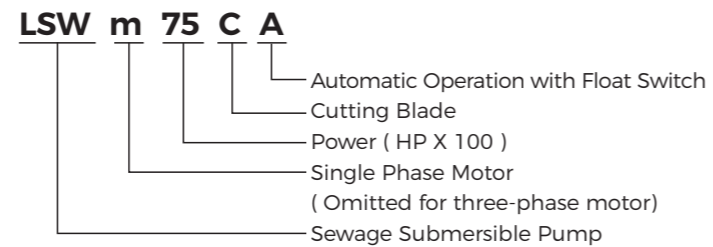
Pump

- Stainless steel shell
- Cast Iron Pump body with special anti-rust treatment
- Fixed cable with unique design
- AISI 304 shaft
- Max.liquid temperature:40°C

Motor

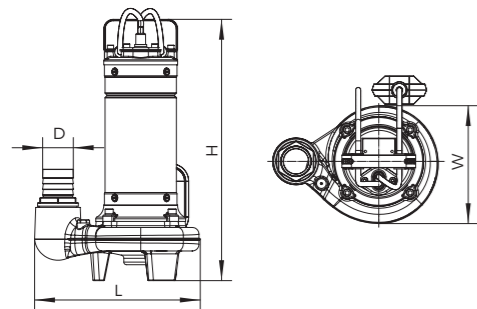
- Motor with copper winding
- Built-in thermal protector for single phase motor
- Insulation class:F
- Enclosures class: IPX8

Identification Codes



Technical Data

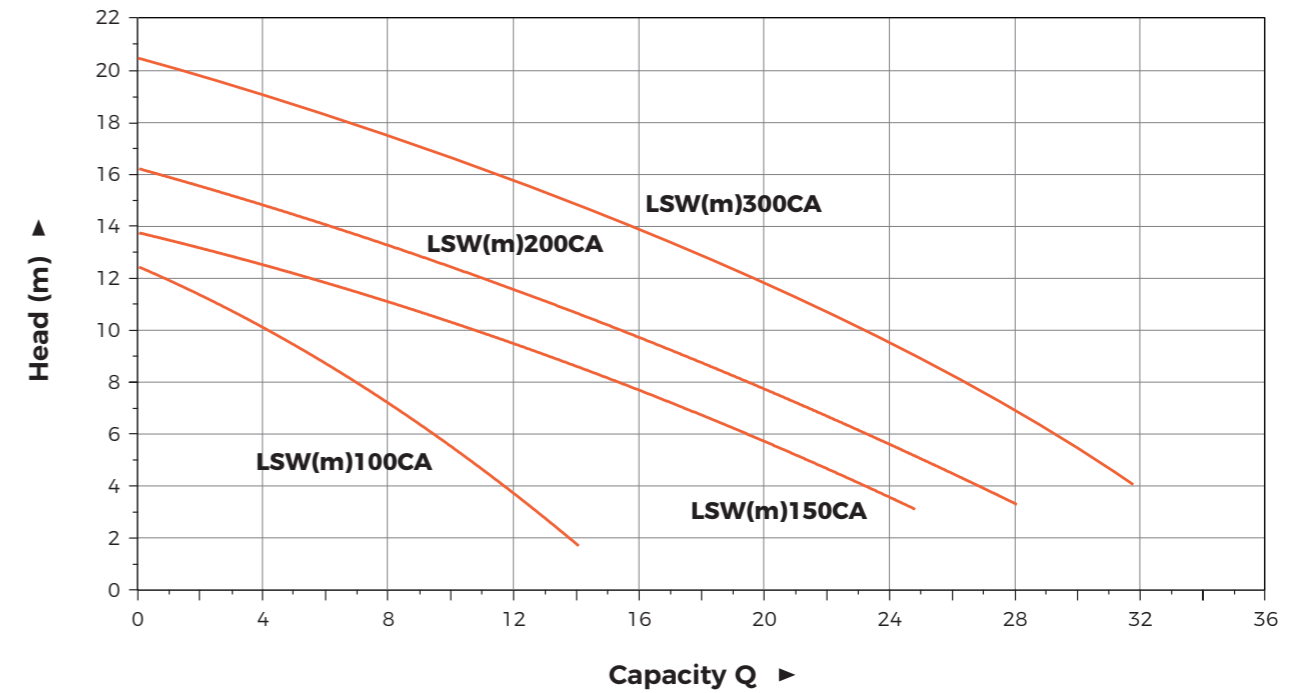
Model	Power		Voltage/Frequency V/Hz	Outlet	Q.Max m ³ /h	H.Max m
	kW	HP				
LSWm100CA	0.75	1.0	180-220/50	G2	15	13
LSWm150CA	1.1	1.5	180-220/50	G2	25	14
LSWm200CA	1.5	2.0	180-220/50	G2	30	17
LSWm300CA	2.2	3.0	180-220/50	G2	32	21.5



Dimension

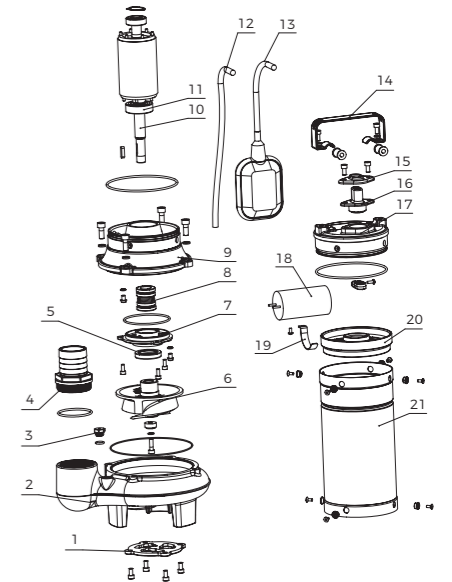
Model	D (mm)	L (mm)	W (mm)	H (mm)
LSWm100CA	G2/50	260	185	403
LSWm150CA	G2/50	269	186	446
LSWm200CA	G2/50	269	186	460
LSWm300CA	G2/50	269	186	480

Hydraulic Performance Curves



Material Table

No.	Part	Material	No.	Part	Material
1	Cutting blade	AISI 304	12	Cable line	
2	Pump body	HT 200	13	Float switch	
3	Exhaust valve	HP59-1	14	Handle	AISI 304
4	Connector	ABS	15	Cable cover	AISI 304
5	Oil seal		16	Cable sheathing	Neoprene
6	Impeller	HT 200	17	Top cover	HT 200
7	Oil chamber cover	HT 200	18	Capacitor	
8	Mechanical seal	SiC/Carbon +Carbon/Ceramic	19	Capacitor clamp	Q235
9	Oil chamber	HT 200	20	Upper cover	ADC 12
10	Rotor	45# + AISI 304	21	Stator	
11	Bearing				



Package Information

Model	GW (Kgs)	L (mm)	W (mm)	H (mm)	Quantity (PCS/20'TEU)
LSWm100CA	14.8	310	230	468	839
LSWm150CA	18.55	315	230	510	757
LSWm200CA	19.95	315	230	525	736
LSWm300CA	21.35	315	230	555	696

